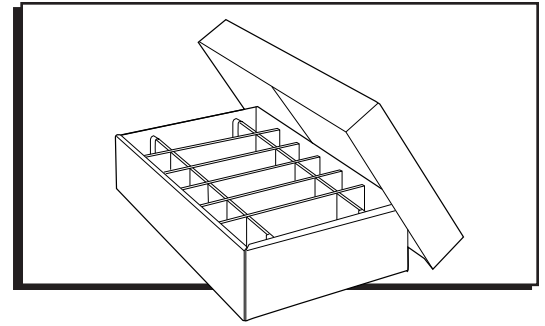


ULINE S-18439

CORSTAT™
IN-PLANT HANDLER –
17 x 10 x 4"

1-800-295-5510
uline.com



BOX ASSEMBLY

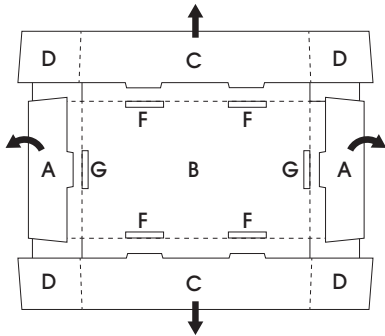


Figure 1

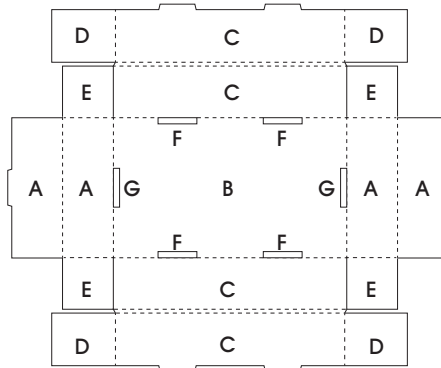


Figure 2

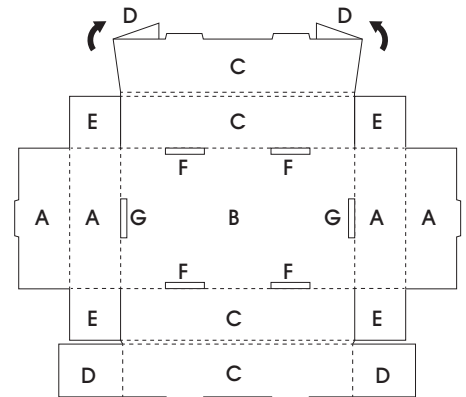


Figure 3

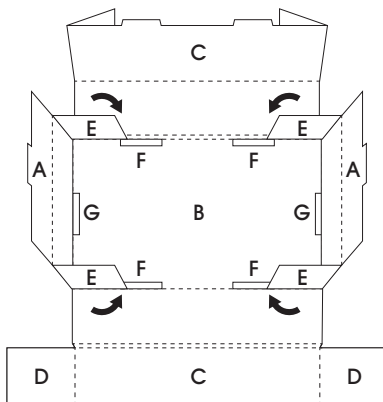


Figure 4

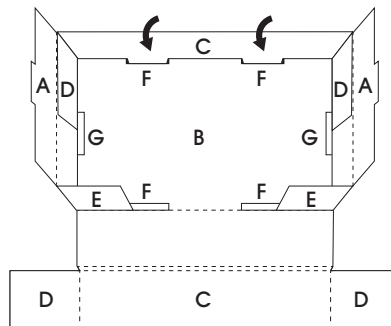


Figure 5

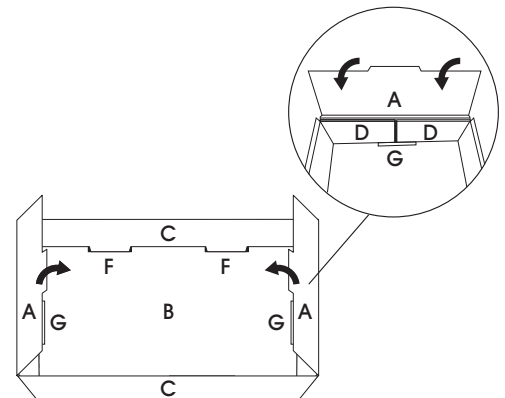


Figure 6

1. Place unassembled box on a flat surface with flaps facing up. (See Figure 1)
2. Unfold all flaps. (See Figure 2)
3. On one side, fold side flaps (D) outward. (See Figure 3)
4. On the shorter side of the box, fold in all four side flaps (E) over slots (F). (See Figure 4)
5. Fold side panel (C) over side flaps (E). Make sure side flaps (D) are folded outward and against side panel (A). (See Figure 5)
6. Lock the side panel tabs (C) into slots (F). (See Figure 6)
7. Repeat steps 3-6 for the other side.
8. Fold side flap (A) over side flaps (D), locking the side flap tab (A) into slots (G). (See Figure 6)
9. Repeat step 8 for the other side.
10. Box is assembled. (See Figure 7)

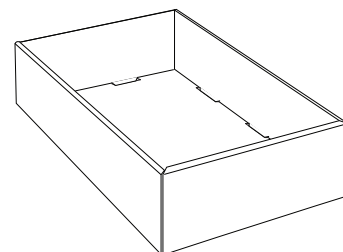


Figure 7

BOX LID ASSEMBLY

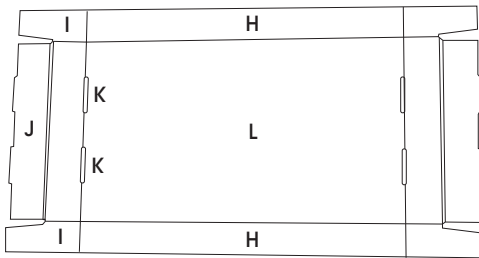


Figure 8

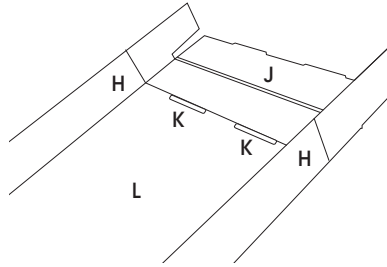


Figure 9

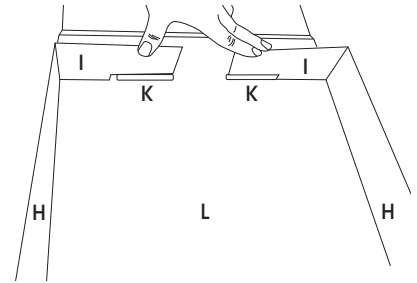


Figure 10

1. Fold lid sides (H) along the crease. (See Figures 8-9)
2. On one side of the box lid, fold in lid sides (I) over slots (K). (See Figure 10)

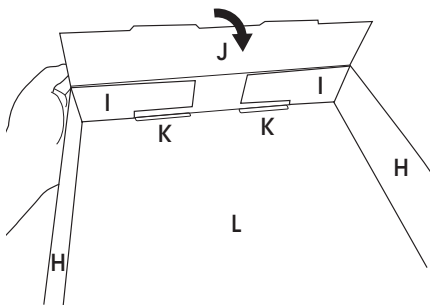


Figure 11

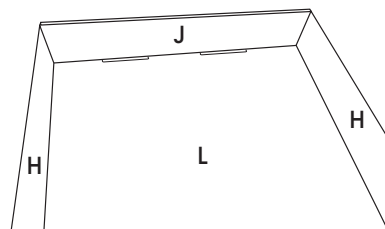


Figure 12

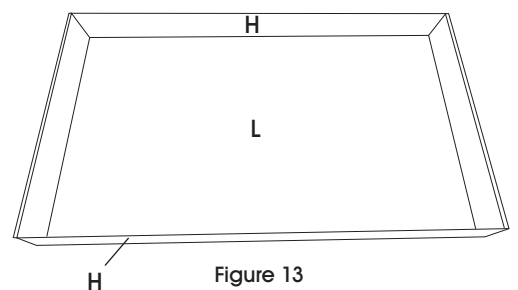


Figure 13

3. On the same side of the box lid, fold box top lid (J) over tabs (I), locking the top tab lids into slots (K) on the top panel. (See Figures 11-12)
4. Repeat steps 1-3 for the other side.
5. Lid assembled. (See Figure 13)

BOX DIVIDER ASSEMBLY

SHORT DIVIDER

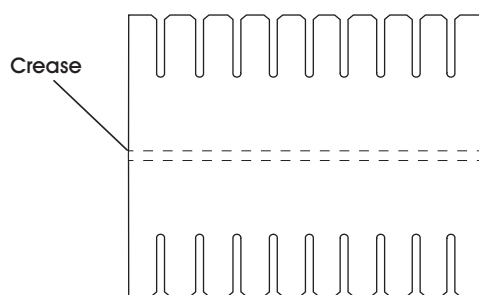


Figure 14

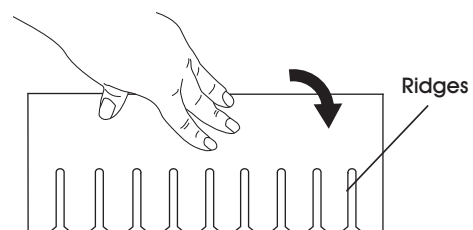


Figure 15

1. Fold short divider along the crease line. (See Figures 14-15)

BOX DIVIDER ASSEMBLY CONTINUED

LONG DIVIDER

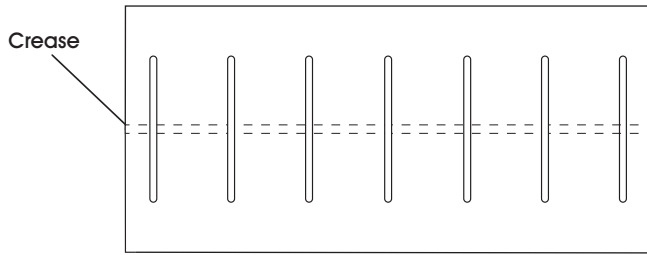


Figure 16

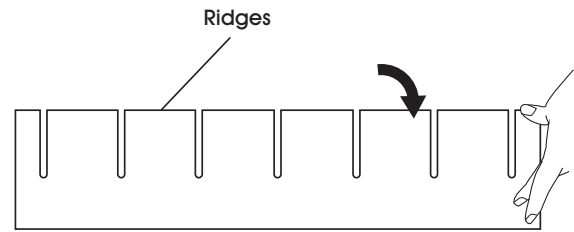


Figure 17

1. Fold long divider along the crease line. (See Figures 16-17)

INSERTING DIVIDERS

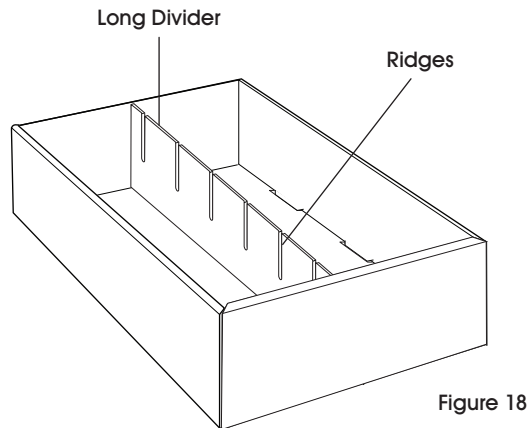


Figure 18

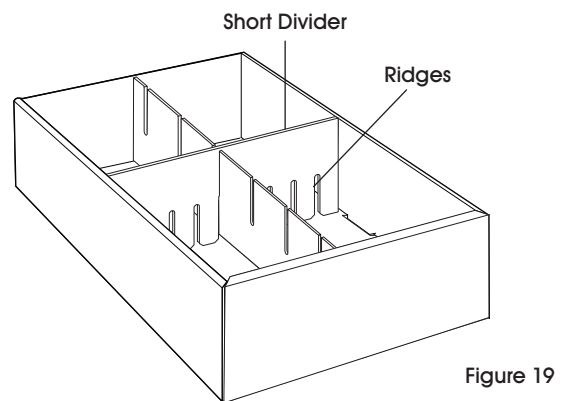


Figure 19

1. Insert long divider into the box as needed, ridges facing upward. (See Figure 18)
2. Insert short divider into the box as needed, ridges facing downward and align with the ridge from the long divider. (See Figure 19)