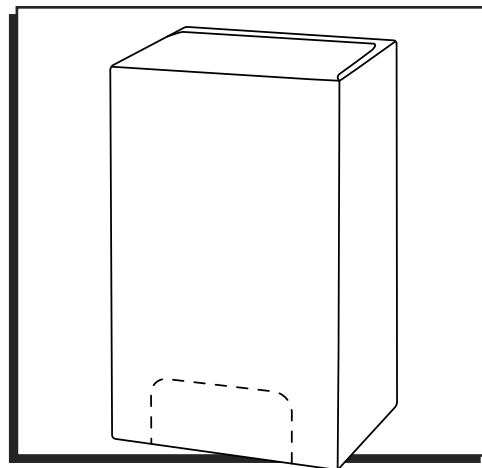


ULINE S-17276 HAND CLEANER REFILL BOX

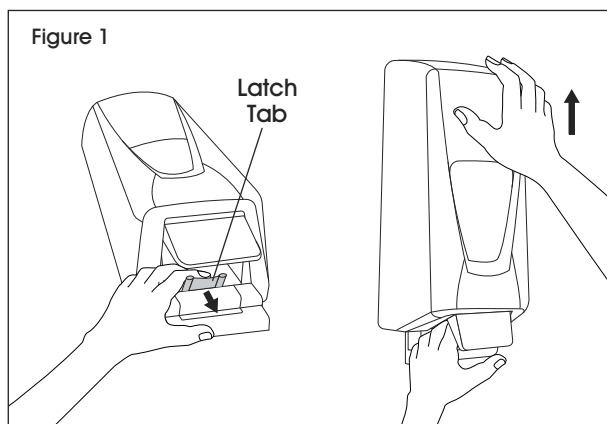
1-800-295-5510
uline.com



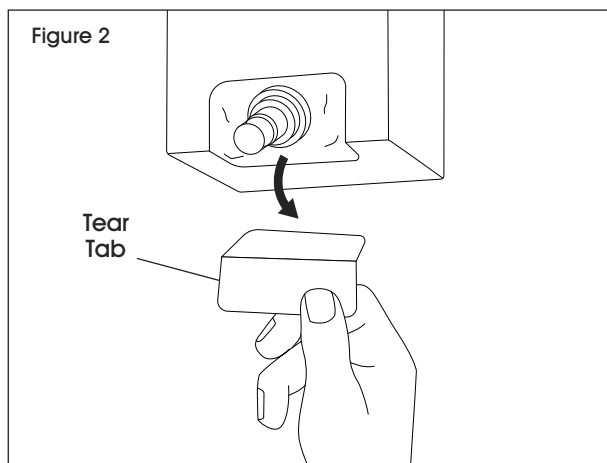
LOADING

 **NOTE:** Do not remove bag from box.

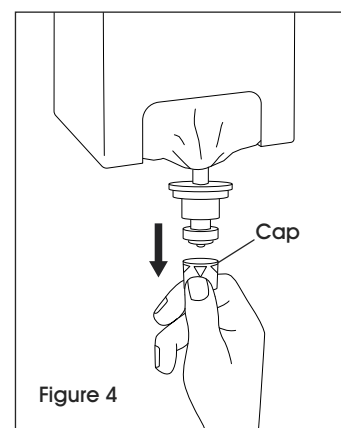
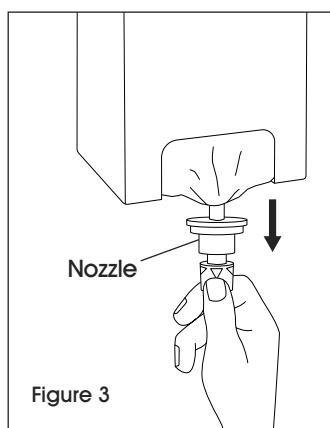
1. Open dispenser by pulling down latch tab behind push bar and pushing up on cabinet. (See Figure 1)



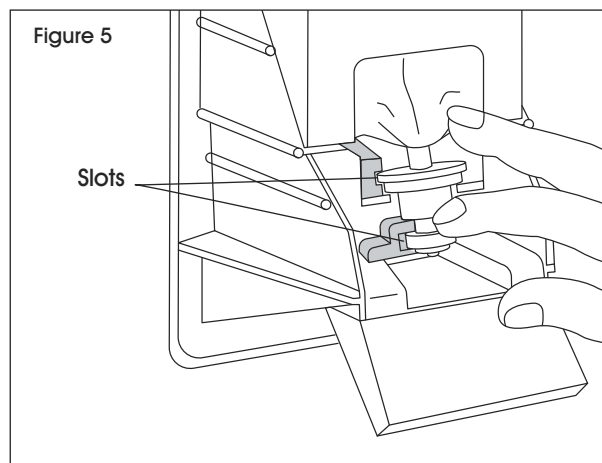
2. Fully remove tear tab at bottom of carton. Do not remove bag from box. (See Figure 2)

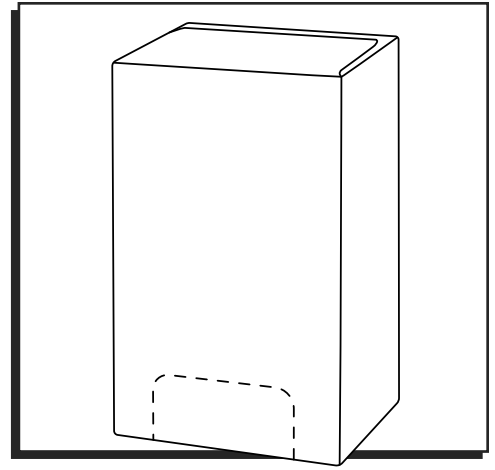


3. Pull nozzle down and out of opening. (See Figure 3)
4. Remove and discard red cap from nozzle. (See Figure 4)



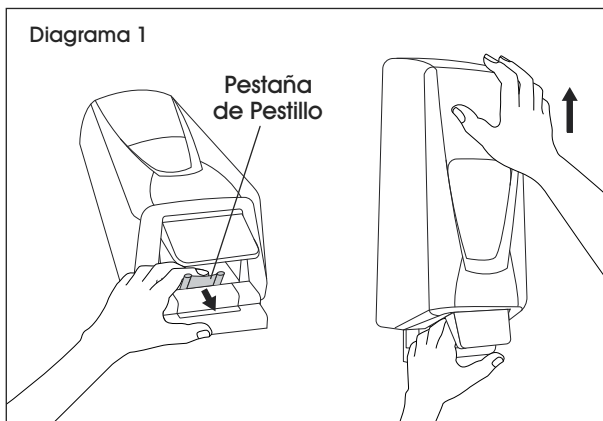
5. Place carton into dispenser, slide nozzle into both slots and close cover. (See Figure 5)



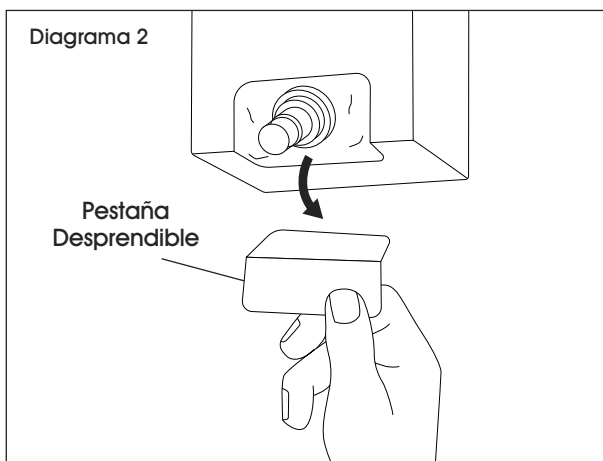
**CAJA DE REPUESTO DE
JABÓN PARA MANOS****CARGAR**

 **NOTA:** No retire la bolsa de la caja.

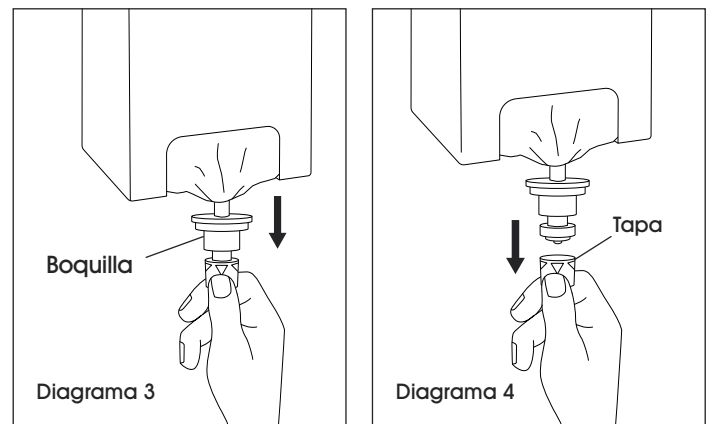
1. Abra el despachador jalando la pestaña de pestillo hacia abajo detrás de la barra de presión y empujando el gabinete hacia arriba. (Vea Diagrama 1)



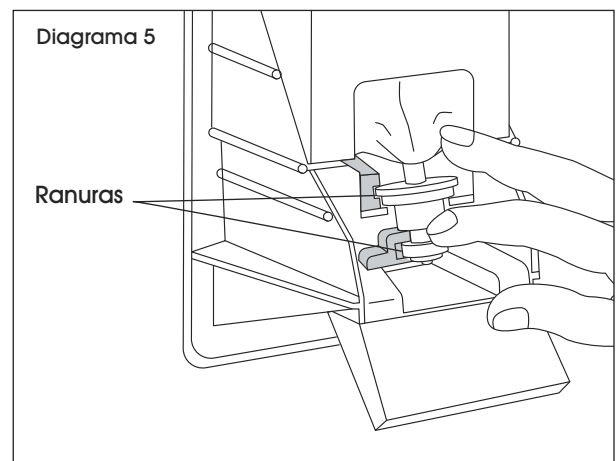
2. Retire por completo la pestaña desprendible en la parte inferior de la caja. No retire la bolsa de la caja. (Vea Diagrama 2)

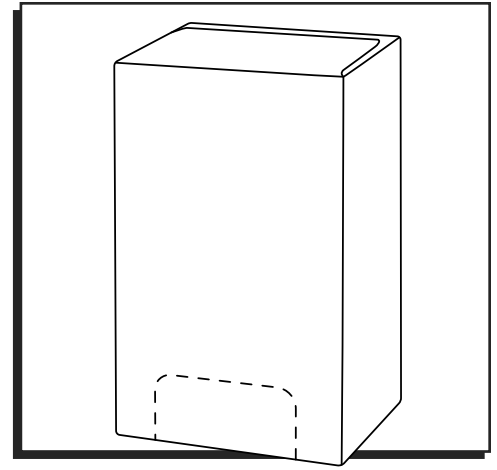


3. Jale la boquilla hacia abajo y fuera de la abertura. (Vea Diagrama 3)
4. Retire y deseche la tapa roja de la boquilla. (Vea Diagrama 4)



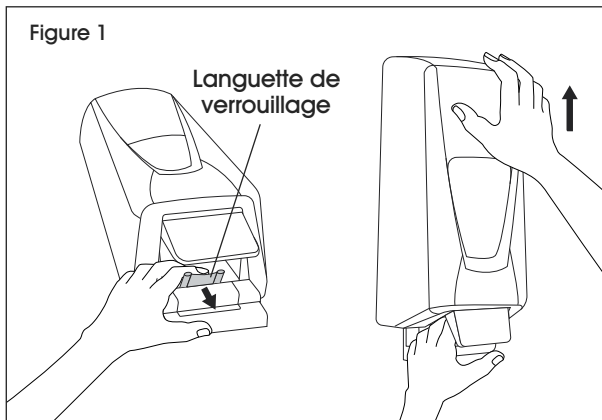
5. Coloque la caja en el despachador, deslice la boquilla en ambas ranuras y cierre la cubierta. (Vea Diagrama 5)



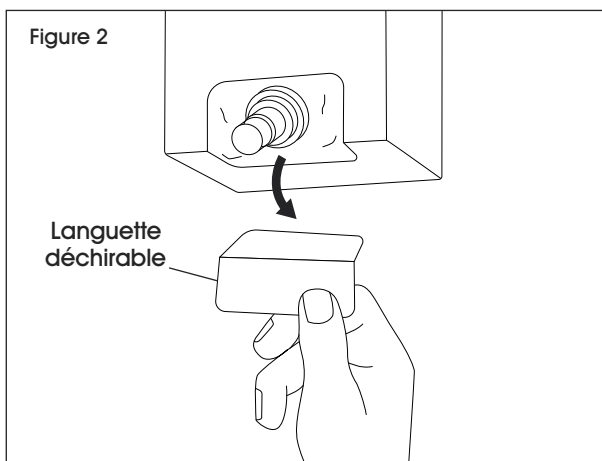
**BOÎTE DE RECHARGE
DE NETTOYANT POUR
LES MAINS****CHARGEMENT**

 **REMARQUE : Ne sortez pas le sac de la boîte.**

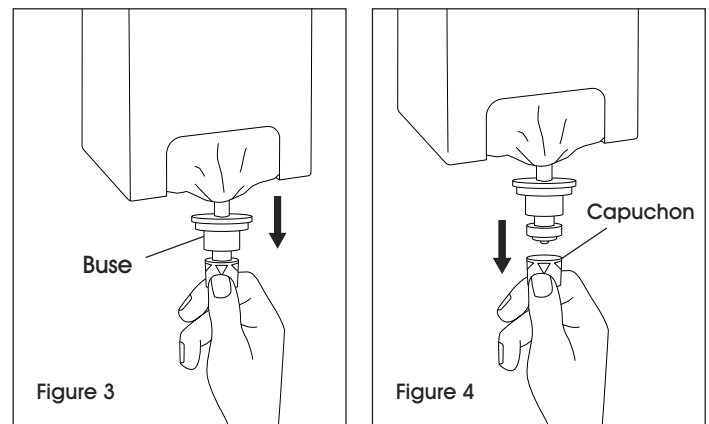
1. Ouvrez le distributeur en tirant la languette de verrouillage située à l'arrière de la barre de poussée vers le bas et en poussant le boîtier vers le haut. (Voir Figure 1)



2. Enlevez complètement la languette déchirable située au bas de la boîte. Ne sortez pas le sac de la boîte. (Voir Figure 2)



3. Tirez la buse vers le bas et hors de l'ouverture. (Voir Figure 3)
4. Enlevez et jetez le capuchon rouge de la buse. (Voir Figure 4)



5. Placez le carton dans le distributeur, glissez la buse dans les deux fentes et fermez le couvercle. (Voir Figure 5)

