

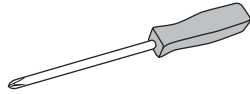
ULINE H-1307-MOUNT CONVEX MIRROR FASTENER SET

1-800-295-5510
uline.com

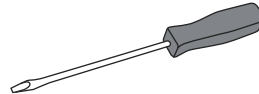
TOOLS NEEDED



Drill



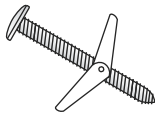
Phillips Head Screwdriver



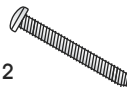
Flat Head Screwdriver

PARTS

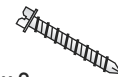
3" Drywall Anchor x 2



2 1/2" Wood Anchor x 2



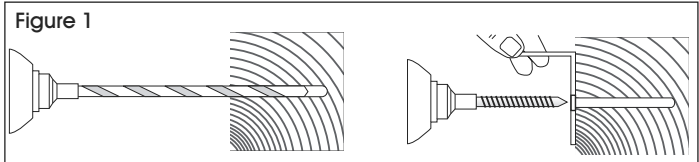
1 3/4" Concrete Anchor x 2



INSTALLATION

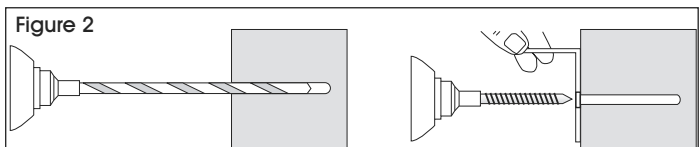
WOOD ANCHOR

1. Using a 1/8" drill bit, pre-drill a hole into wood. (See Figure 1)
2. Drive wood anchor into pre-drilled hole until anchor is fully seated. (See Figure 1)



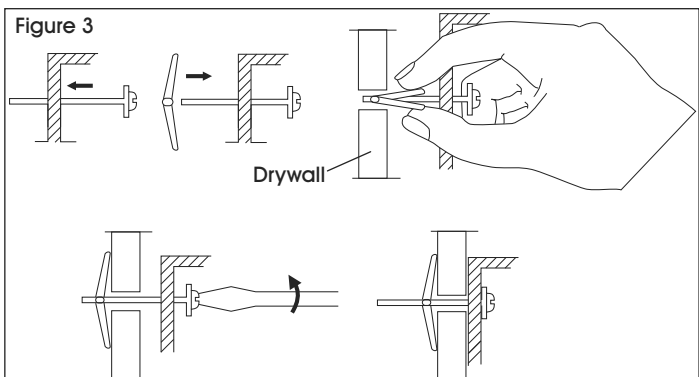
CONCRETE ANCHOR

1. Using a hammer drill, drill a hole 1/4" deeper than anchor embedment. (See Figure 2)
2. Drive concrete anchor into pre-drilled hole until anchor is fully seated. (See Figure 2)



DRYWALL ANCHOR

1. Using a 1/2" drill bit, drill a hole through drywall surface.
2. Assemble the drywall bolt and toggle on object. (See Figure 3)
3. Insert bolt and toggle into pre-drilled hole in drywall. (See Figure 3)
4. Tighten bolt against surface. (See Figure 3)



ULINE H-1307-MOUNT

ESPEJO CONVEXO

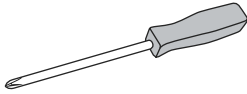
SET DE INSTALACIÓN

800-295-5510
uline.mx

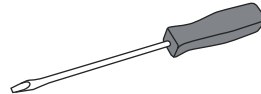
HERRAMIENTAS NECESARIAS



Taladro



Desarmador de Cruz

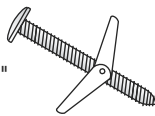


Desarmador Plano

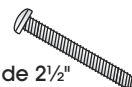
PARTES



2 Anclajes para Tablaroca de 3"



2 Anclajes para Madera de 2 1/2"

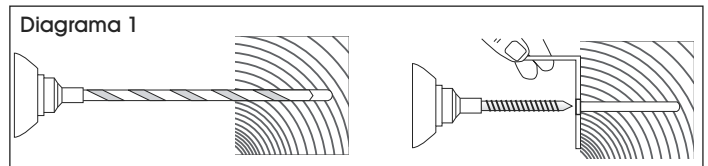


2 Anclajes para Concreto de 1 3/4"

INSTALACIÓN

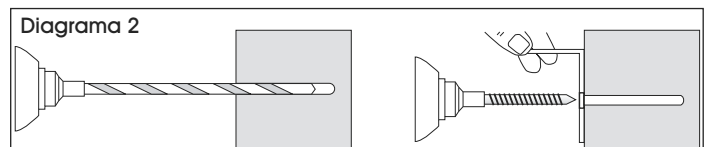
ANCLAJE PARA MADERA

1. Perfore un orificio en la madera con una broca de 1/8". (Vea Diagrama 1)
2. Introduzca el anclaje para madera en el orificio hasta que el anclaje quede bien colocado. (Vea Diagrama 1)



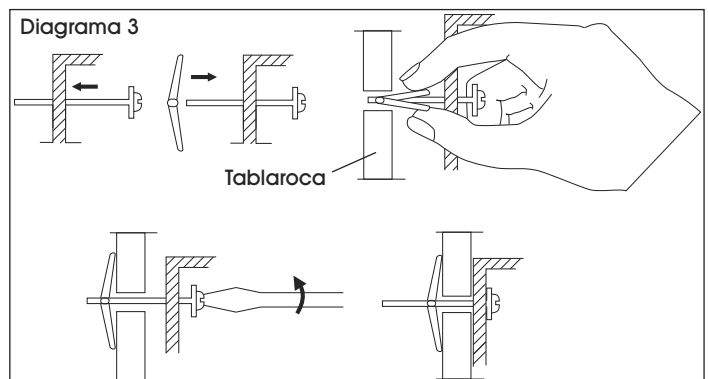
ANCLAJE PARA CONCRETO

1. Con un taladro percutor perfore un orificio 1/4" más profundo que el largo del anclaje. (Vea Diagrama 2)
2. Introduzca el anclaje para concreto en el orificio hasta que el anclaje quede bien colocado. (Vea Diagrama 2)



ANCLAJE PARA TABLAROCA

1. Perfore un orificio en la superficie del tablaroca con una broca de 1/2".
2. Ensamble la mariposa para tablaroca en el objeto. (Vea Diagrama 3)
3. Inserte la mariposa en el orificio previamente taladrado en el tablaroca. (Vea Diagrama 3)
4. Apriete el anclaje contra la pared. (Vea Diagrama 3)



ULINE H-1307-MOUNT

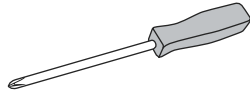
MATÉRIEL D'INSTALLATION POUR MIROIR CONVEXE

1-800-295-5510
uline.ca

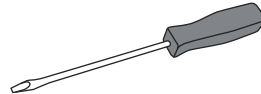
OUTILS REQUIS



Perceuse

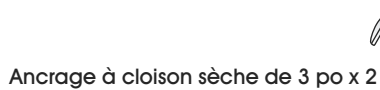


Tournevis à tête cruciforme



Tournevis à tête plate

PIÈCES



Ancrage à cloison sèche de 3 po x 2



Ancrage à bois de 2 1/2 po x 2

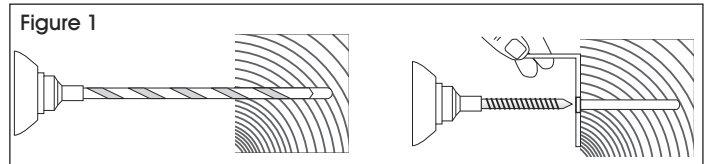


Ancrage à béton de 1 3/4 po x 2

INSTALLATION

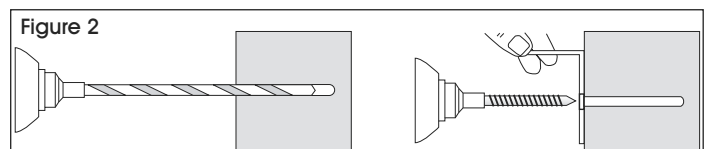
ANCRAGE À BOIS

1. À l'aide d'une mèche de 1/8 po, prépercez un trou dans le bois. (Voir Figure 1)
2. Enfoncez l'ancrage à bois dans le trou prépercé jusqu'à ce qu'il soit complètement inséré. (Voir Figure 1)



ANCRAGE À BÉTON

1. À l'aide d'un marteau perforateur, percez un trou étant 1/4 po plus profond que l'encastrement d'ancrage. (Voir Figure 2)
2. Enfoncez l'ancrage à béton dans le trou prépercé jusqu'à ce qu'il soit complètement inséré. (Voir Figure 2)



ANCRAGE À CLOISON SÈCHE

1. À l'aide d'une mèche de 1/2 po, percez un trou à la surface de la cloison sèche.
2. Assemblez le boulon à cloison sèche et la cheville à bascule sur l'article. (Voir Figure 3)
3. Insérez le boulon et la cheville à bascule dans le trou prépercé de la cloison sèche. (Voir Figure 3)
4. Serrez le boulon jusqu'à ce qu'il repose fermement contre la surface. (Voir Figure 3)

